

## What do I have to pay attention to when buying a smoke detector?

Battery operated smoke detectors are not expensive and you can purchase them in specialised shops or in building supplies stores.

Make sure that the smoke detectors have a **CE label**, referring to **DIN EN 14604** standards.

For larger housing units it is convenient to interconnect the detectors installed in the separate rooms by a radio circuit or a wire linkage. In this case, when one detector is triggered, all the acoustic signals of the other detectors are activated automatically.

## How do I install smoke detectors?

Smoke detectors can easily be installed by sticking or screwing them to ceilings.

Because smoke rises upwards, smoke detectors ideally should be placed in the middle of the ceiling.

The minimum distance from the detectors to walls or partitions should be at least 50 cm.

## Don't forget ...

In case of fire, call the fire brigade immediately:

## Emergency call 112

### Further questions?

The local fire brigade and the fire prevention offices will give you further information.



#### Editorial

Ministry of the Interior and  
for Sports of the State of Hesse  
Friedrich-Ebert-Allee 12  
65185 Wiesbaden  
[www.hmdis.hessen.de](http://www.hmdis.hessen.de)

**Title photo:** Franz-Josef Hahn

**Configuration:** N.Faber de sign, Wiesbaden

#### Kindly supported by

Ministry of commerce, energy, transport and development  
of the State of Hesse  
[www.wirtschaft.hessen.de](http://www.wirtschaft.hessen.de)  
and  
Federal Association of Fire Brigades Hesse e.V.  
[www.feuerwehr-hessen.de](http://www.feuerwehr-hessen.de)

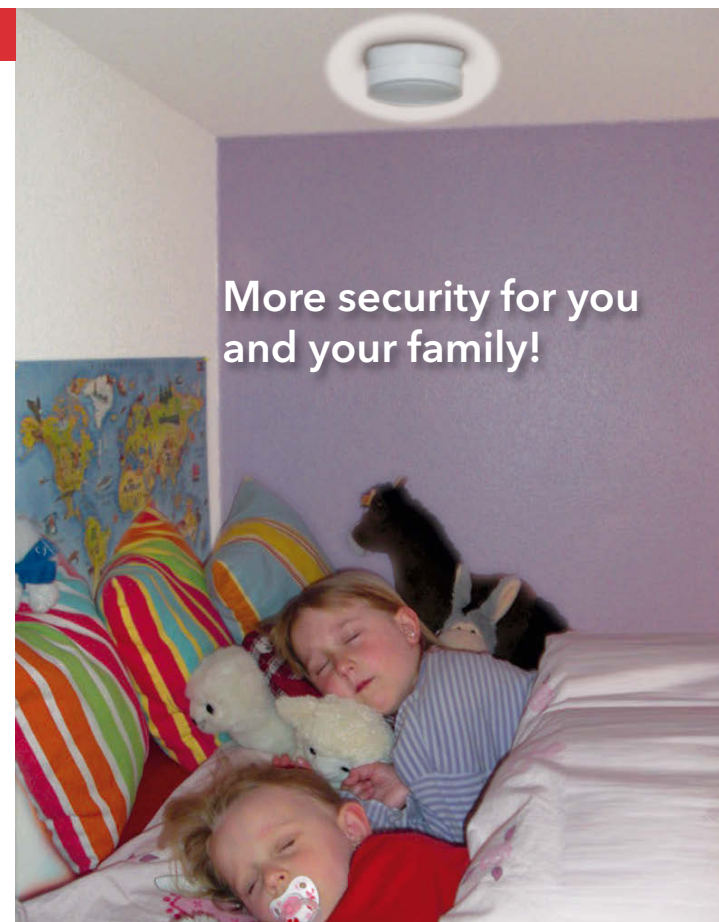
data: 12/2014



Ministry of the Interior and  
for Sports of the State of Hesse



## Smoke detectors save lives!





Dear Citizens,

"Smoke alarms save lives" is more than an appropriate heading.

Smoke alarms cannot prevent a fire from breaking out, but when it comes to a residential fire, these devices provide a prompt warning. Fire outbreaks are especially dangerous at night because gases from smoke and fire not only spread within seconds, they can also cause people who are sleeping to lose consciousness after a very short time.

Therefore, installing a smoke alarm is very important. Since 2005, the state of Hesse has legally required that in new and renovated buildings at least the following rooms should be equipped with smoke alarms:

- Bedrooms and nurseries
- Hallways that serve as an escape route.

Other residences must be retrofitted by 31/12/2014. You can achieve great safety benefits with very little effort and cost.

Kind regards

**Peter Beuth**  
Hessian Ministry of the Interior and Sports

## Why is smoke so dangerous?

In case of fire, not the flames but toxic smoke gas is the most frequent cause of death. This dangerous gas emerges from the phase leading up to the actual flames and spreads out so quickly, that within a few seconds orientation and consciousness may be lost.

In the event of fire, you only have a few minutes to escape from the inside of the house. Thus, smoke detectors are indispensable in order to make sure that fire can be detected in time.

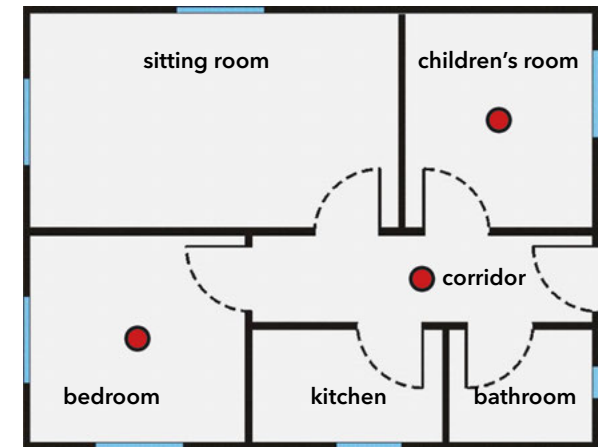
Smoke detectors do not prevent a fire, but they detect smoke gas and send out an audible warning signal in due time.



Photo: Fire brigade Wiesbaden

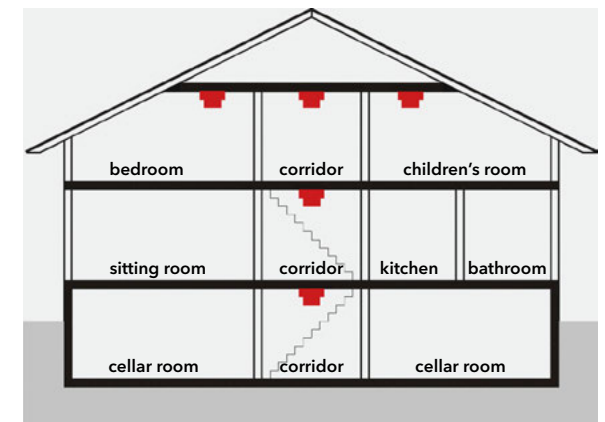
## Which places must be controlled?

Ground view of an apartment:



● smoke detectors (minimum protection)

longitudinal section of a single-family house:



■ smoke detectors (minimum protection)